

## Modello SP G\_CE

The Riflesso collection is characterised by the simplicity and lightness of the different shapes of its diffusers. The three larger silhouettes are now also available with a second LED, the new G and P shapes allow for cluster compositions, and the new wall version completes the collection.

### GLASS FINISH



**AMTR**  
amber transparent

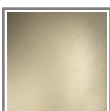


**CRTR**  
crystal transparent

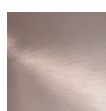


**FUTR**  
smoky transparent

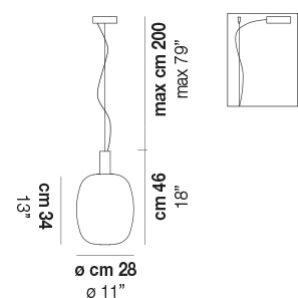
### FRAME FINISH



**BKS**  
matt gold 3



**RAV**  
matt copper 2



RIFLESSO SP G FUTR BKS L32 CE

### LIGHT SOURCES

1x12,5W 35V LED 2700 K 12,5 W 1150 lm DIM2 Phase Cut

1x12,5W 35V LED 2700 K 12,5 W 1150 lm DIM3 0-10V, Push

1x12,5W 35V LED 3000 K 12,5 W 1150 lm DIM2 Phase Cut

1x12,5W 35V LED 3000 K 12,5 W 1150 lm DIM3 0-10V, Push

### TECH DATA



VOLUME: Mc 0,10

PACKAGE: N.2

NET WEIGHT: Kg 4,50

GROSS WEIGHT: Kg 6,50

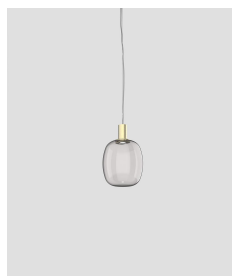
### CERTIFICATIONS

EU Cert



International Cert

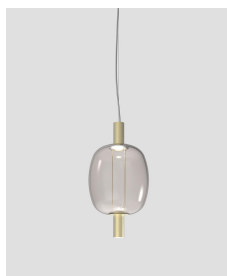
### OTHER VERSIONS AVAILABLE



RIFLESSO SP P



RIFLESSO SP 2



RIFLESSO SP 2L2